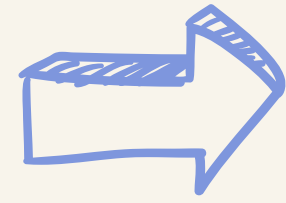




THE ROWANS SAFEGUARDING TEAM AND CHAMPION AREAS

WELCOME TO ALL VISITORS

Other places to get support...



ChildLine: National free telephone counselling service 0800 1111 www.childline.org.uk



NSPCC: National child protection charity offering advice 0808 800 5000 www.nspcc.org.uk



Kooth: Youth online wellbeing community www.kooth.com



Young Minds: Youth mental health charity www.youngminds.org.uk



The Mix: Essential support for under 25's 0808 808 4994 www.themix.org.uk

The Designated Safeguarding Leads (DSL) are Mrs May, Mrs Martin and Miss Webb



Mrs May

My areas are;
FGM/Honour Based Violence
Child and Adolescent to Parent Violence and Abuse
Safer Recruitment



Mrs Martin

My areas are;
Behaviour
Attendance
PREVENT
Online Safety and Harms
Domestic Abuse/Operation Encompass
Safer Recruitment



Miss Webb

My area is;
SEND

Safeguarding Leads

Designated Safeguarding Lead is a fancy title for the person who is in charge of managing any safeguarding concerns.

Remember at The Rowans and primary SEN you can speak to any member of staff if you have a concern.

Safeguarding is everyone's responsibility

If you have a concern - report it immediately. We are all responsible for safeguarding.

What is Safeguarding?

All of the adults care about the health and wellbeing of all pupils and work to support their rights to be safe and supported, have an education and be successful. This means we are all committed to safeguarding you.

We will always listen if a pupil shares a problem and will then speak to the DSL team to find the best next steps

To keep pupils safe we also work with...

We can't keep pupils safe without working with others. This includes asking parents/carers to help and support pupils as well as other agencies such as social services, CAMHS, the police and charities who provide advice and support. We do this to ensure all pupils have every opportunity to be safe and happy.

We only do this when we think it is in a pupil's best interests.

Primary Deputy Designated Safeguarding Leads (DDSL)



Mrs Bowley

my areas are;
Primary SEND
Medication
Safer Recruitment



Mr May

my areas are;
Primary SEND
Medication



Miss Gough

my areas are;
Primary SEND
Child Abuse

Secondary Deputy Designated Safeguarding Leads (DDSL)



Mrs Skinner

my areas are;
Mental Health
ACES and Trauma
Emotional Abuse/ Neglect



Miss Jones

my areas are;
Exploitation
Gangs and County Lines
Substance Misuse
Graded Care Profile/Signs of Safety
CME/Attendance
Medication
Child on Child Abuse
Physical Abuse and Sexual Abuse

It is never a pupils fault if someone is hurting or abusing them. There is always someone who can help. We tell pupils 'If someone is hurting you they could be hurting others' REPORT IT TO AN ADULT.

We work to safeguard pupils at

School

Home

Out and about

On phones and online

Want to know more?

Our safeguarding ethos and policy is all about the pupils. so please ask if you want to know more. You can always read the full safeguarding policy on our website www.therowans-that.org.uk/

